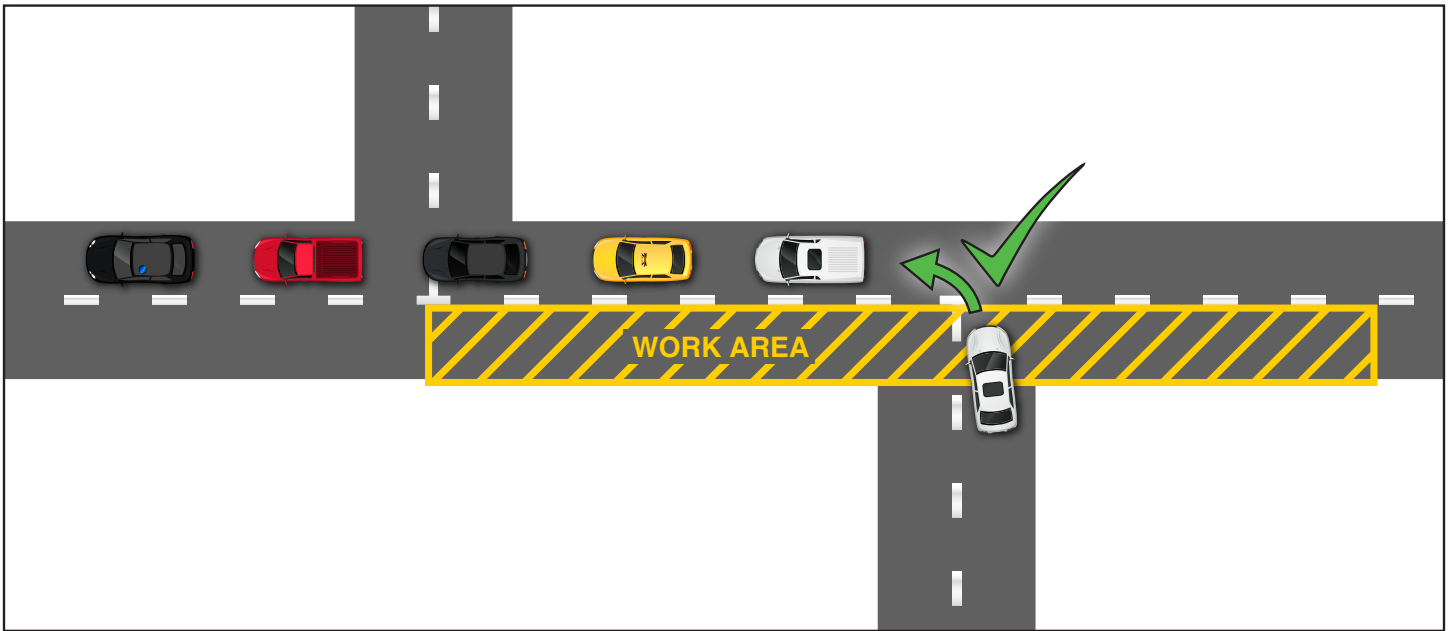


SR-9, FROM SPRINGDALE TO THE ZION NATIONAL PARK

During construction, your access or side street may be in the middle of the one-mile closure. During lower traffic times, it may be difficult to determine which direction has the right of way. Before pulling out onto SR-9, **please wait for traffic traveling in the direction you want to go** and then follow the last car in the line.

CORRECT METHOD:



INCORRECT METHOD:

